

# Copcut Rise Development, Droitwich

## Project Profile

**Client:** William Davis Homes

**Designer:** BWB Consultants

**Value:** £6.5m



Construction of the primary infrastructure for a new residential development which when complete will have over 700 homes together with a plot on the A38 site frontage accommodating a new care home. The site is 40 ha in area and is located on the South Western edge of Droitwich Spa, bounded by the A38 Roman Way to the North and East, Copcut Lane to the South and the Birmingham to Hereford Railway Line to the West.

The main work included bulk earthworks to re-profile the site together with construction of a new road junction for the development, site roads, foul and surface water sewers, SUDS drainage, street lighting and Utilities infrastructure.

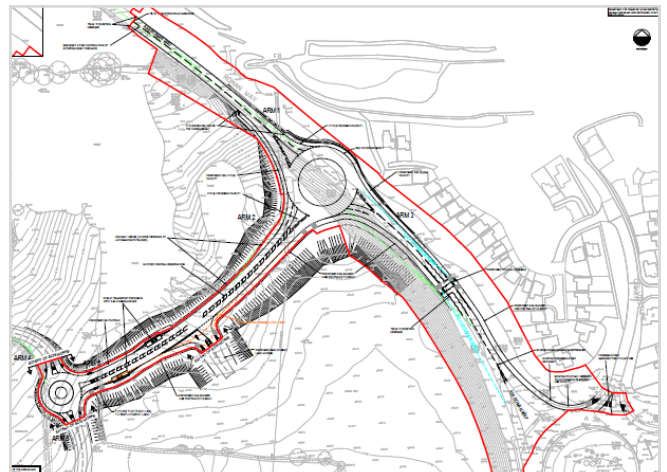
- Strategic Earthworks were required across the whole site to produce the designed development platforms, create SUDS storage ponds and form the main site access point. Filling was required to adjust levels to land Parcels 1, 2, 3, 4, 5, 6, 7 and 11 to facilitate the housing developments. Earthworks included;

- ◇ 158,000m<sup>2</sup> vegetation strip.
- ◇ 59,000m<sup>3</sup> topsoil stripped and stored.
- ◇ 93,000m<sup>3</sup> of excavation and engineered re-profiling and filling
- ◇ 20,000m<sup>3</sup> topsoil replaced on batters and landscaped areas 150mm thick
- ◇ All earthworks materials compliance tested and validated



- Section 278 works to create a new development access from the A38 trunk road which included;

- ◇ Construction of a new 50m ICD roundabout on the A38 Roman Way
- ◇ A 200m long spine road into the development site leading to a 28m ICD roundabout
- ◇ Full road construction including; 6,615m<sup>2</sup> of tarmac base, binder, surface course and kerbs
- ◇ Footpaths, edgings and tactile paving
- ◇ Road markings, specialist surfacing, signage, Toucan Crossing and street lighting
- ◇ Diversion of existing Utilities and installation of new Utility infrastructure
- ◇ Extensive traffic management and night time road closures



# Copcut Rise Development, Droitwich (Cont'd)

## Project Profile

**Client:** William Davis Homes

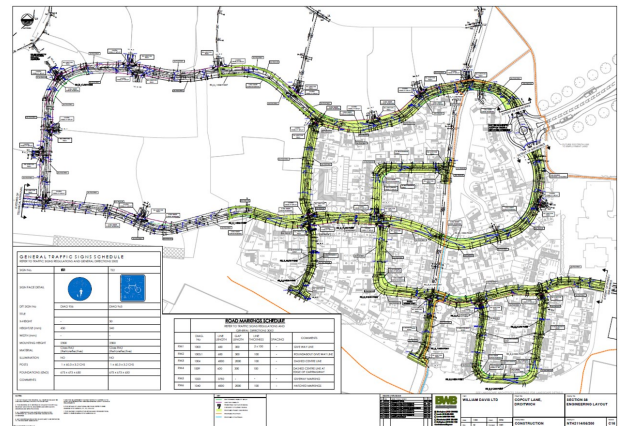
**Designer:** BWB Consultants

**Value:** £6.5m



The Section 38 highways and Section 104 drainage works constructed in our Phase 1 and 2 contracts were as follows:

- Phase 1 (shown in Green on adjacent plan) and Phase 2 (to the south east) roads and sewers
- 10,500m<sup>2</sup> of roads to base & binder course
- 2,400m<sup>2</sup> of footpaths
- 7,905m of foul and surface water sewers
- 300 nr gulleys
- 296 manholes up to 3m diameter
- Ladders installed in 22 chambers over 3m deep.
- Construction of SUDS balancing ponds nr's 1 & 2, together with earthworks only to balancing pond nr 3 (36,000m<sup>3</sup> excavation in total)
- 9 nr outfall headwalls to SUDS balancing ponds
- Installation of utility ducts throughout the site including 285nr duct crossings



Prior to commencement of the contract advance works were required to allow diversion underground of existing 11Kv and 66Kv overhead power lines which crossed the site. Extensive liaison with Western Power Distribution (WPD) was required for this work which included installation of new multiple duct lines across the site to accommodate the diverted cables.



In order to successfully deliver the scheme, extensive liaison with ecologists, archaeologists, highways authority, local residents and many other stakeholders was required throughout the contract period.

